



AFRICAN FORUM
ON URBAN FORESTS

2nd African Forum On Urban Forests

Green Horizons: Shaping the Future Resilience of African Cities through Urban Forests

18 March 2025 - 21 March 2025



in partnership with:



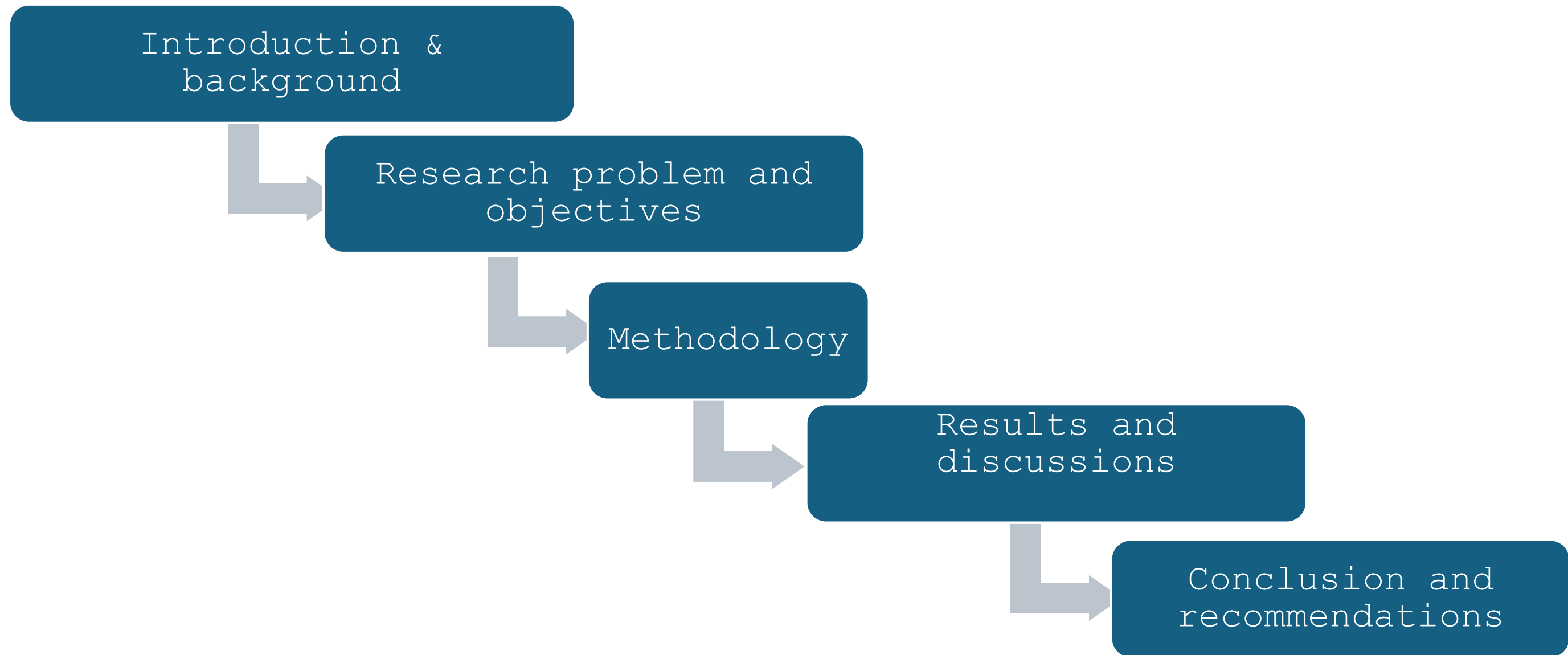
Urban land surface cover dynamics and its impact on land surface temperature between 2011-2021 in Hawassa City, Ethiopia

Tikabo Gebreyesus

PhD candidate

ZEF University of Bonn, Germany

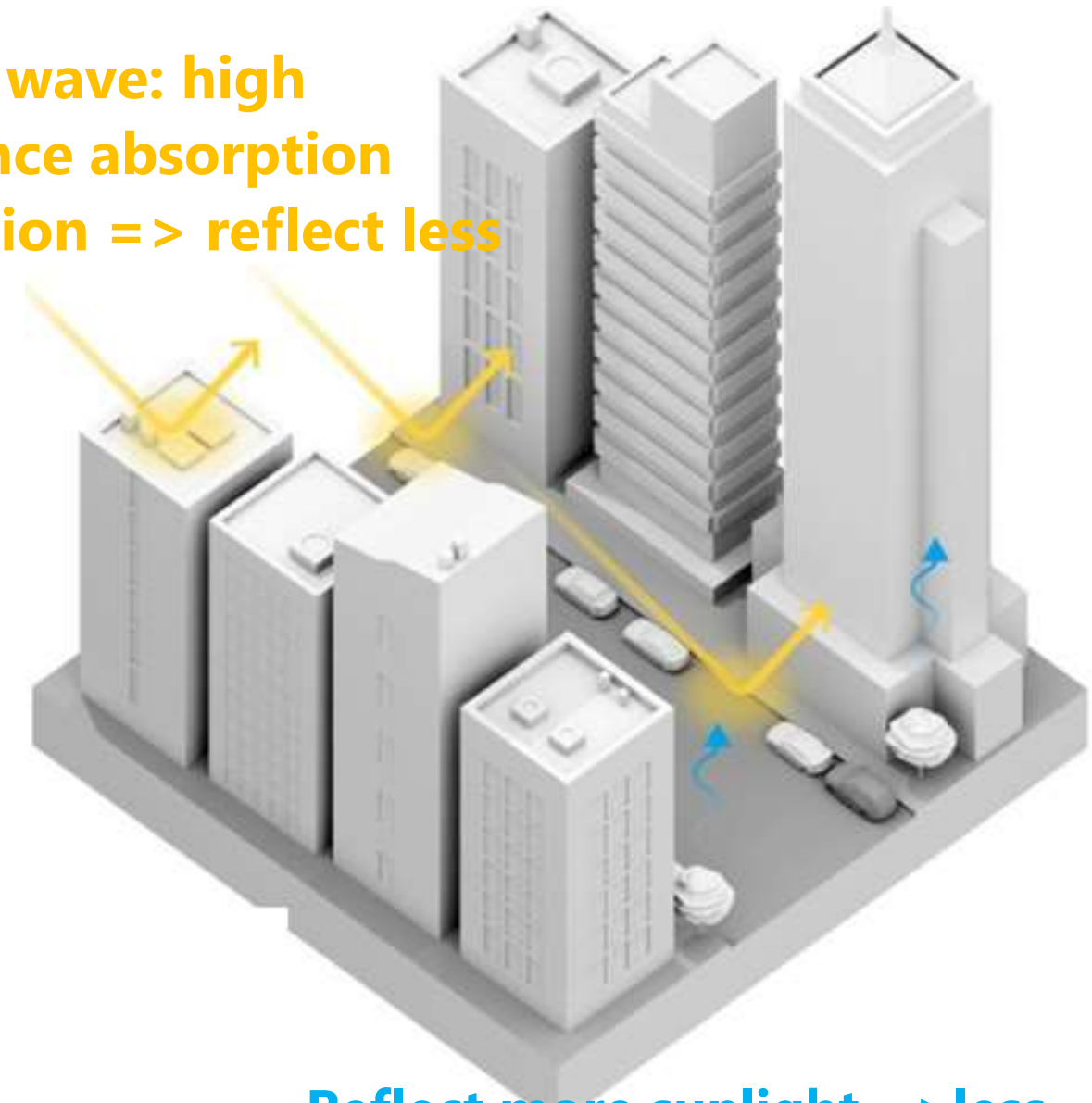
Outline of the presentation



Introduction

- **Urban sprawl** ↑ ~ 95% globally (1990 & 2014)
- **Built-up surface expansion** ~ 2786 km²/day (Behnisch et al., 2022)
- **Less compacted growth** → inefficient land use and widespread impervious cover
- **Why are urban areas hotter?**
 - Materials with high thermal conductivity trap more heat
 - Greater absorption of solar radiation compared to rural areas

Short wave: high radiance absorption radiation => reflect less



Reflect more sunlight => less heat absorption, more evapotranspiration

Urban centers are 1-6°C hotter than surrounding rural areas

Introduction

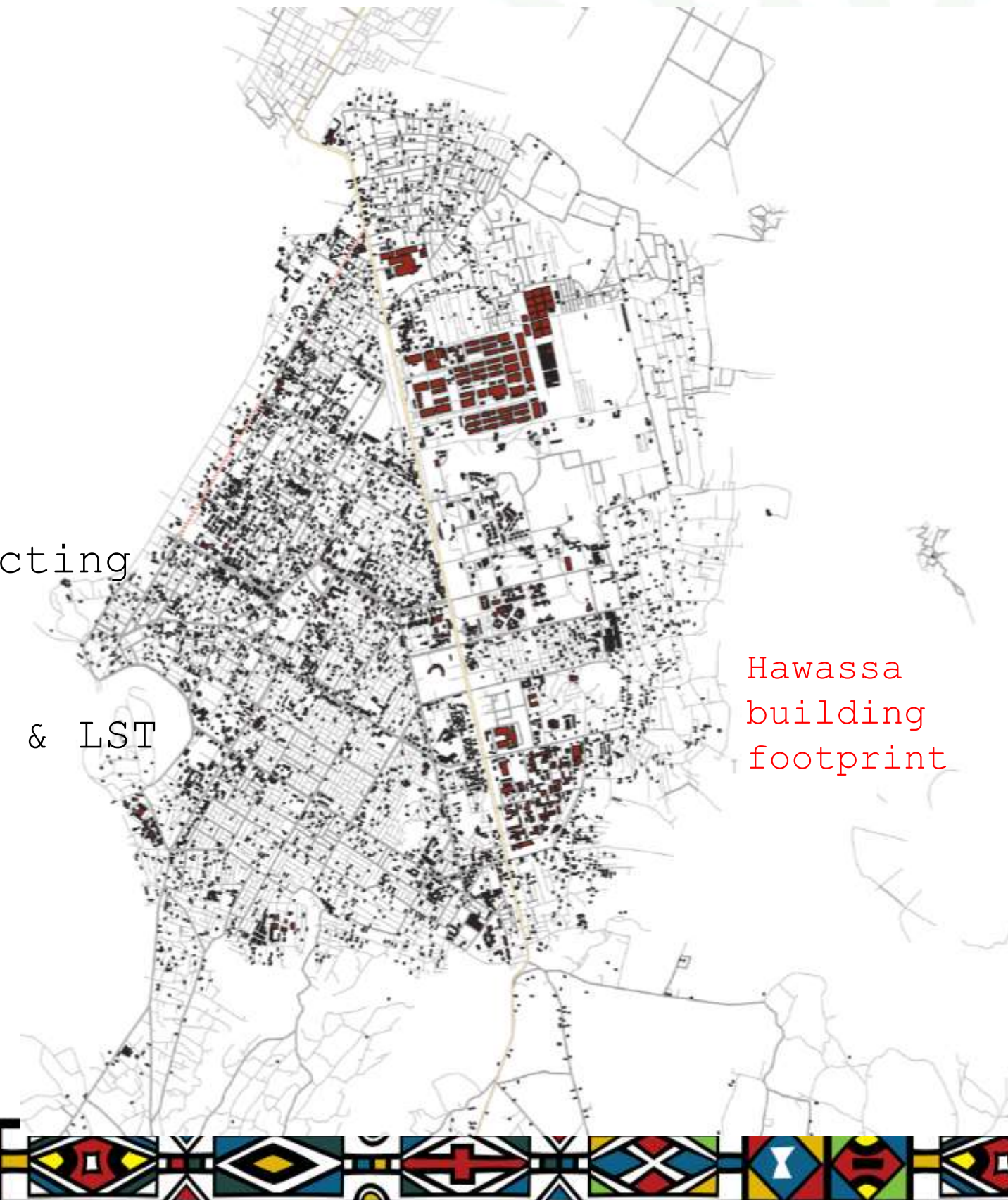
Existing studies in Ethiopia:

- ✓ focus on broad-scale land cover change using satellite image
- ✓ overlook fine-scale surface cover types affecting LST
- ✓ limited information on surface cover changes & LST impact

This study, **using i-Tree canopy** with high-resolution imagery,

- ✓ provides essential baseline data for urban development

- ✓ guides policy decisions → **urban sustainability**



Aims and objectives

This study examines the impact of urbanization on land surface cover change and its role in triggering climate change impacts in Hawassa, Ethiopia.

- **Specific objectives:**

- ✓ Assess the proportional trend between grey and green coverage in Hawassa City.

- ✓ Detect temporal changes in ground surface cover over the past decade

- ✓ Analyze the impact of land surface cover changes on land surface

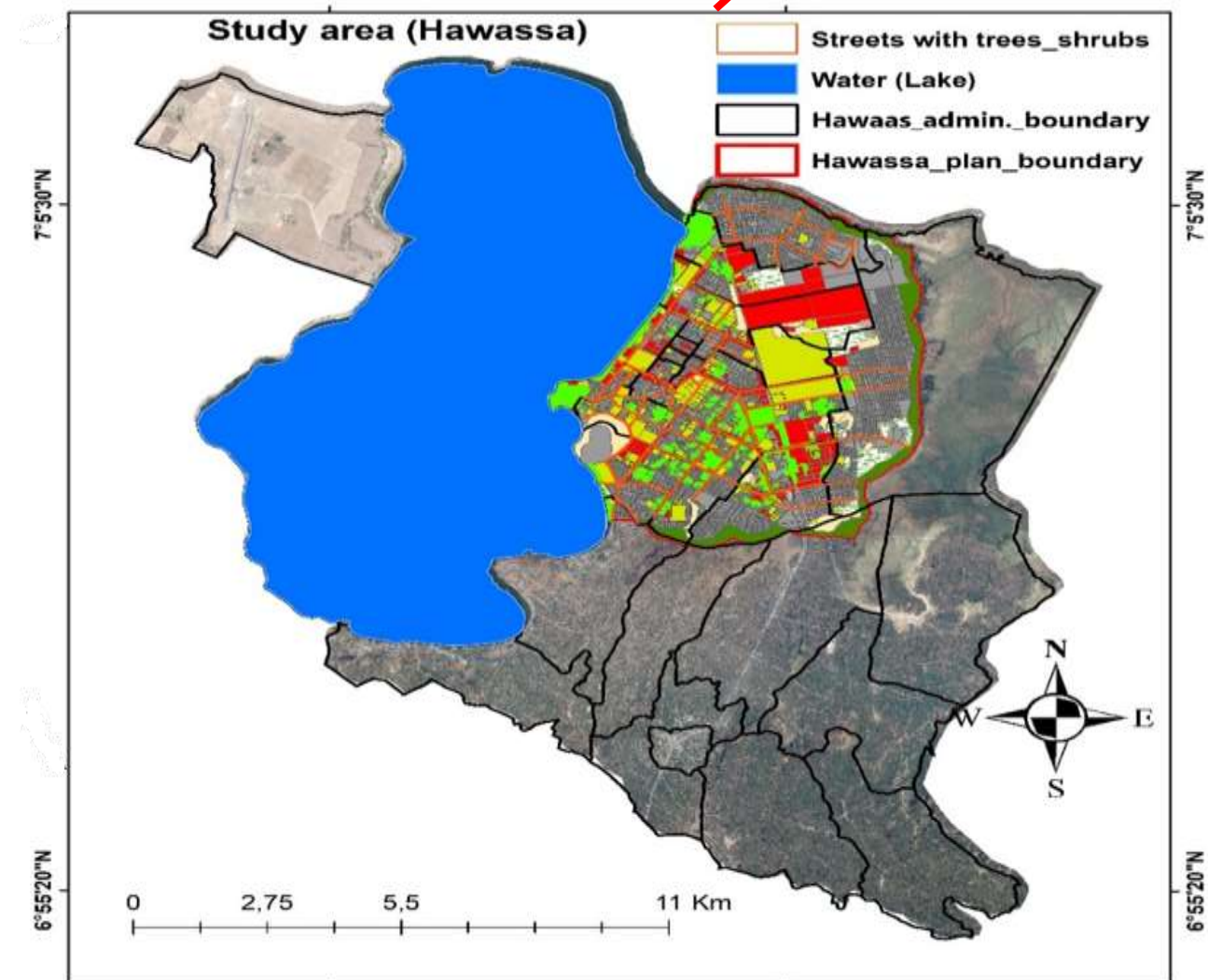
Gebreyesus et al. 2022 Email: gertik@uni-bonn.de / 45tikabo@gmail.com

temperature (2011–2021)

Study area

Hawassa city, Southern Ethiopia

- Medium sized (~ 387K pop., 4% growth/yr)
- Tropical climate with bimodal rainfall pattern
 - Avg. rainfall: ~1,013 mm
 - Temp.: 6–34°C (Avg. 23.75°C)
 - Wind speed: Peaks mid-June–Aug, lowest Sept–June
- UGI elements ~ lack strategic planning



Gebreyesus et al. 2022 Email: gertik@uni-bonn.de / 45tikabo@gmail.com

Methods

Application of i-Tree canopy tool - land

surface cover
i-Tree canopy (high resolution
aerial image)

Defining study area using boundary
shapefile



Predefining cover classes (9
classes)

Classification of random points:
Tree/shrub or Non-Tree/shrub (500
points)

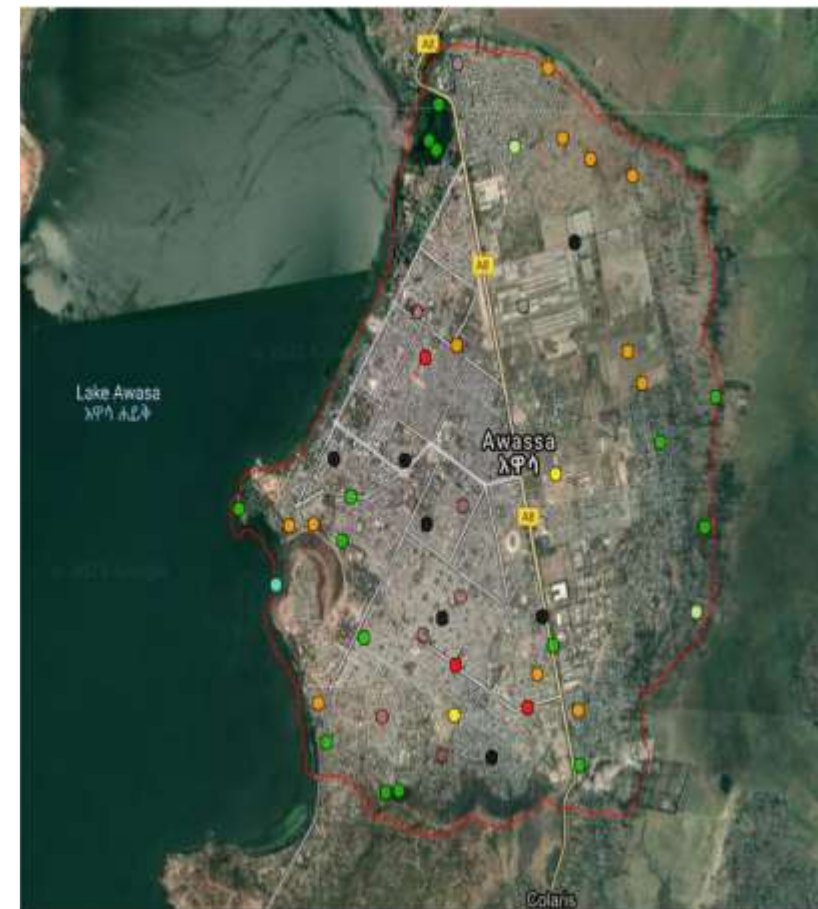


Cover change detection

Transferring to
Google Earth image
2021

Reclassifying in
Google Earth image
2011

Cover change
detection

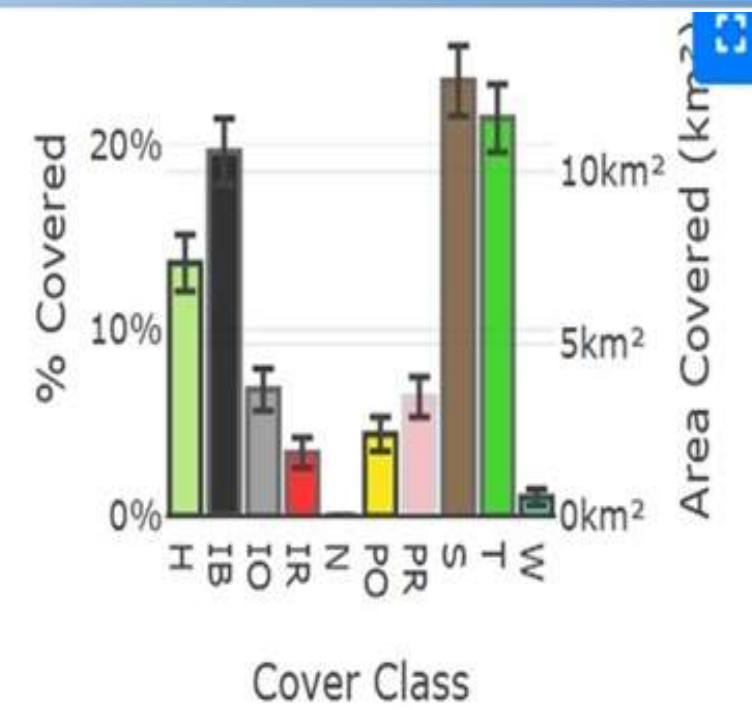


Sample points from the
2021 aerial image (i-Tree
Canopy tool)



Reclassified points
overlaid on the 2011
Google Earth image

Partial view of identifying ground cover types using i-Tree canopy tool



Buildings: 19.6%±1.78 Impervious Other: 6.8%±

[View Results](#)

[Report](#)

ID	Cover Class	Latitude	Longitude
1	Pervious Roads	7.04967	38.47351
2	Impervious Buildings	7.02600	38.47177
3	Impervious Buildings	7.03523	38.50630

Method: Land surface temperature

Remote sensing application (Landsat 5 and 8 images):

- **Image preprocessing:** radiometric calibration → atmospheric correction → NDVI-based emissivity estimation
- **Land Surface Temperature:** Landsat 5 and 8 thermal infrared (TIR)
 - ✓ TIR (band 6) → Landsat 5 for 2011
 - ✓ TIR (band 10) → Landsat 8 for 2021
- **Normalized Difference Vegetation Index (NDVI):**
 - ✓ **Red** (bands 3) and NIR (band 4) = Landsat 5 for 2011
 - ✓ **Red** (bands 4) and NIR (band 5) = Landsat 8 for 2021

Results and discussions

- Dominant covers in 2021:

- Barren land: **23.4%**,
- Tree canopy Cover: **21.4%**
- Building Cover: **19.6%**

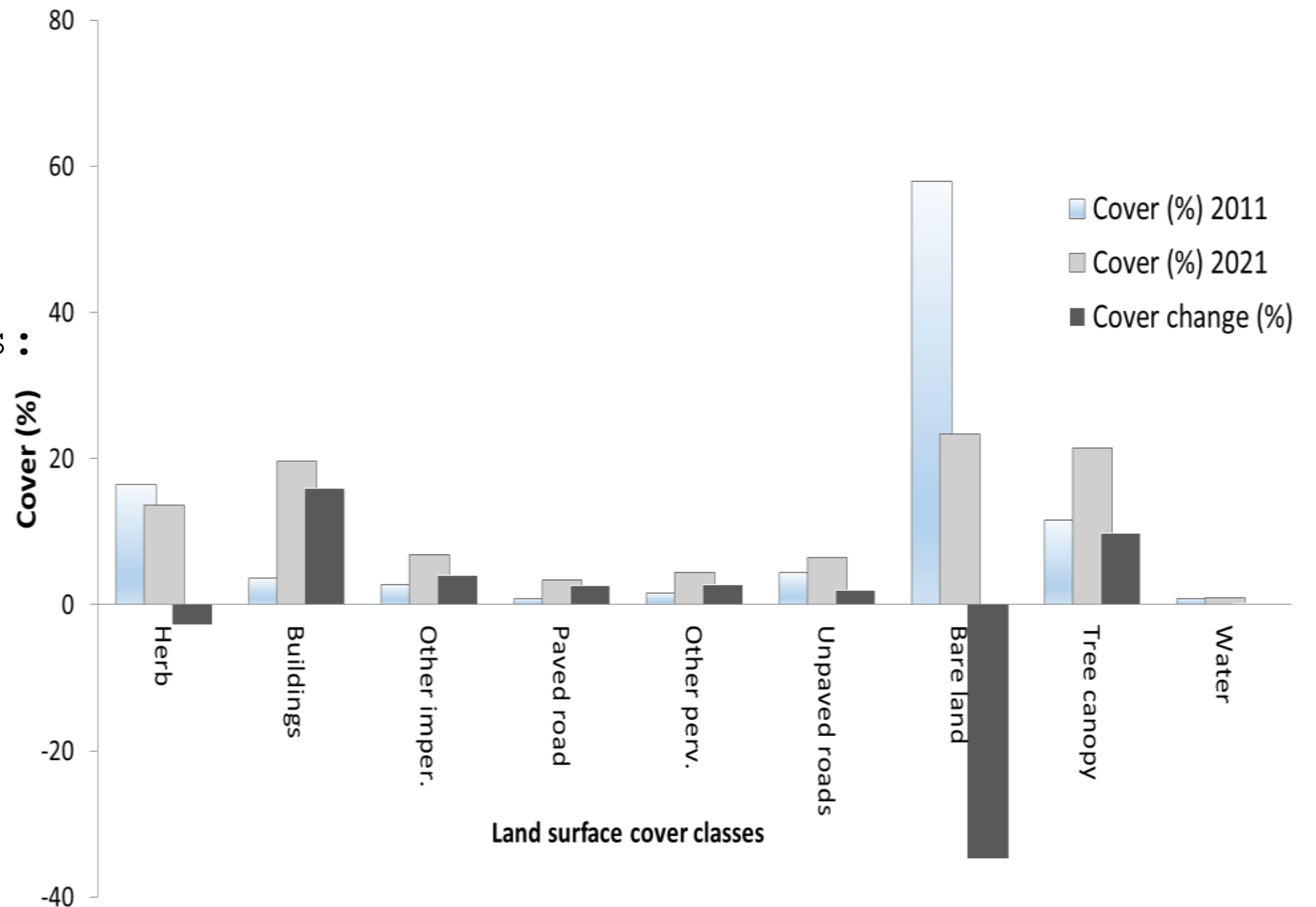
- Land surface cover changes:

- Open land type ↓ **34.6%**
- Tree canopy cover ↑ **9.8%**
- Impervious surfaces ↑ **24%**

✓ Barren land declining was due to rapid urbanization.

✓ TCC raising with ↑housing and other infrastructure

✓ Impervious surfaces ↑heat island risk.

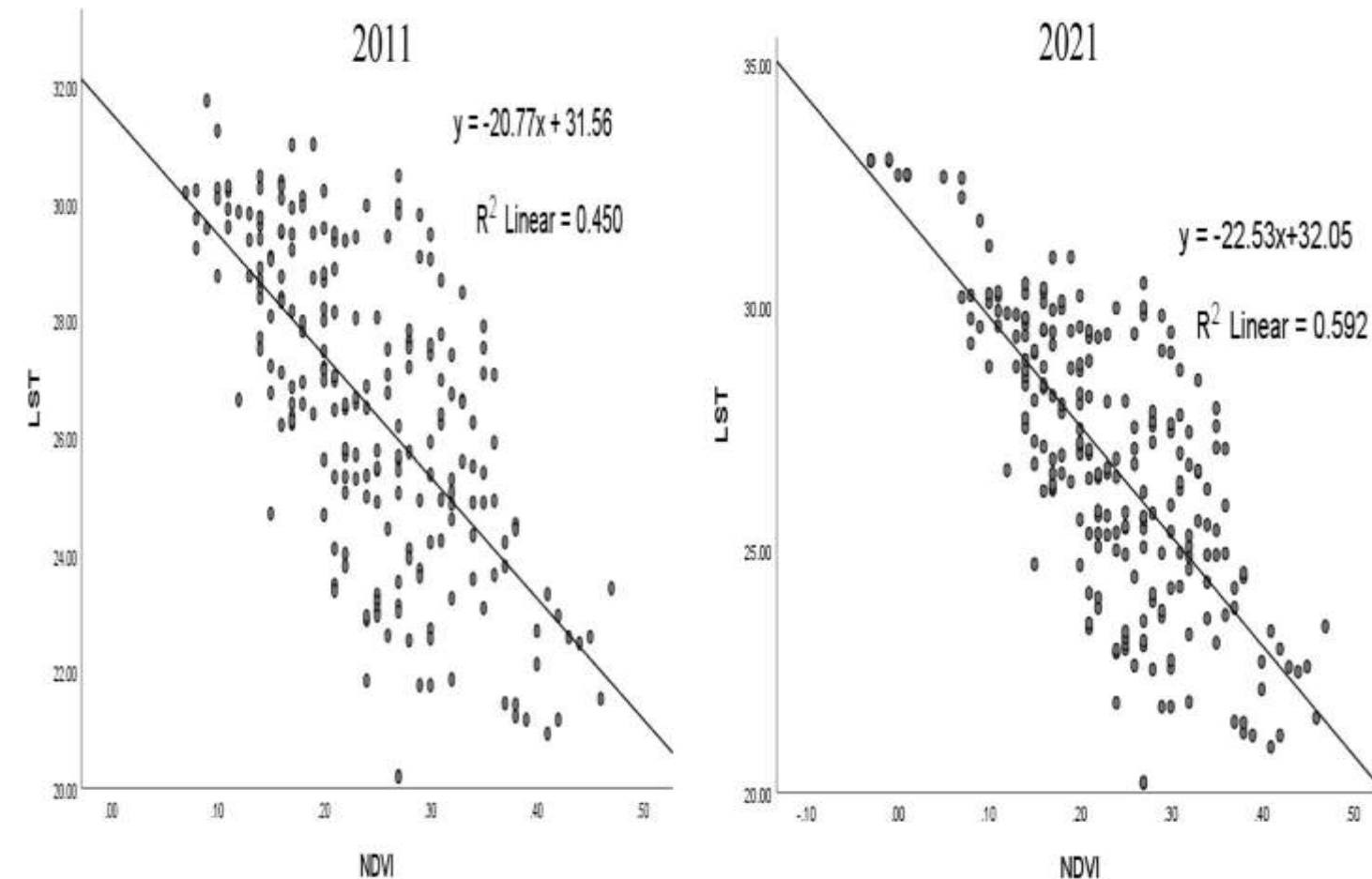


Results and discussions

LST and land surface cover dynamics

Cover (%) / Temp (°C)	2011	2021	Change
Green cover	28.8	36	7.2
Grey cover	13.2	40.6	27.4
Bare land cover	58	23.4	-34.6
Min Temp.	18.38	18.97	0.59
Max Temp.	35.65	33.48	-2.17
Aver. Tem.	27.71	26.04	-1.67

LST and NDVI



- ❖ Higher NDVI value → more tree cover → cool the city
- ❖ Lower NDVI → more built-up areas → increase LST in the city.

Weaker negative correlation in 2011:

- ✓ Less green space coverage
- ✓ none vegetation (e.g., water) may also contribute to lower LST

Results and discussions

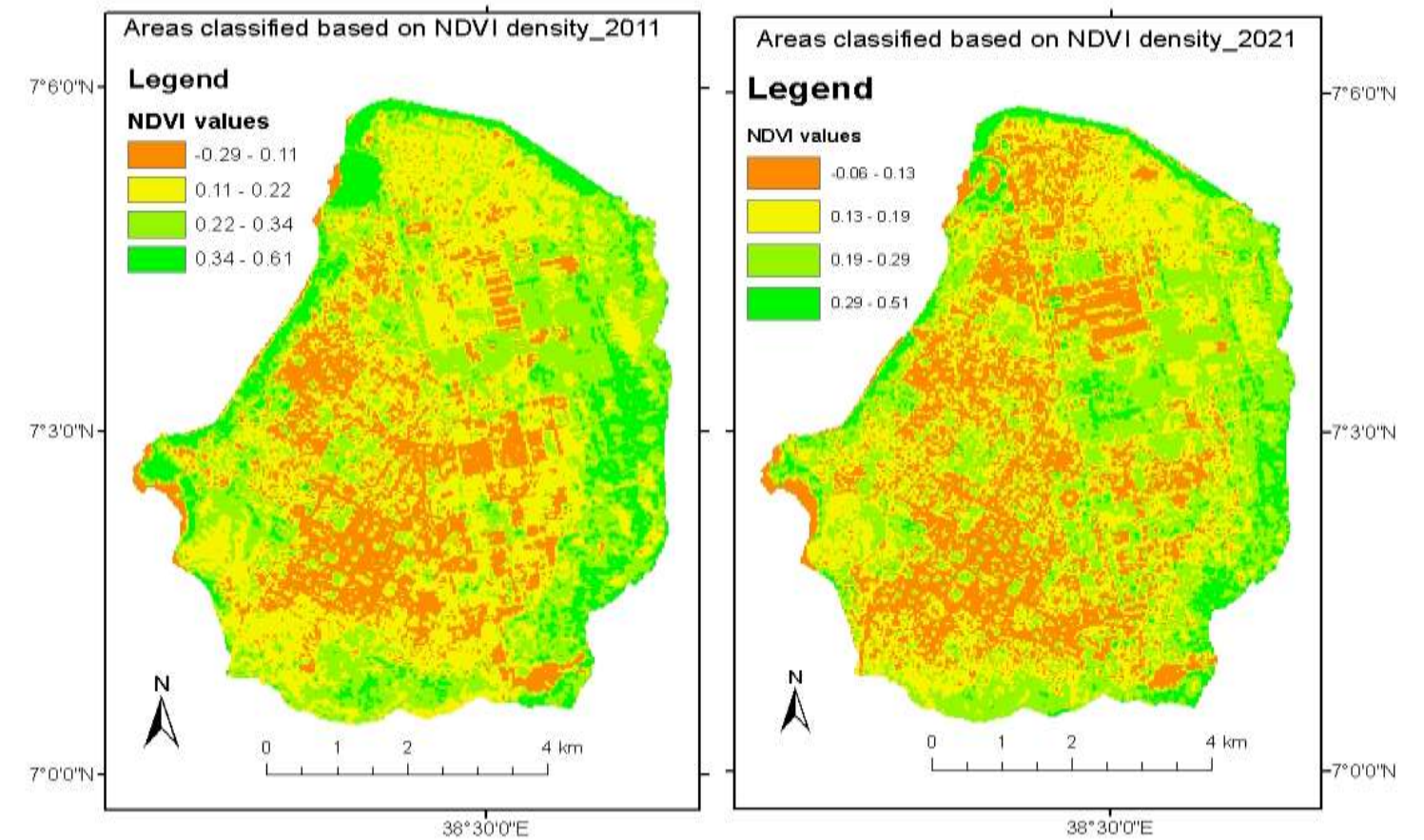
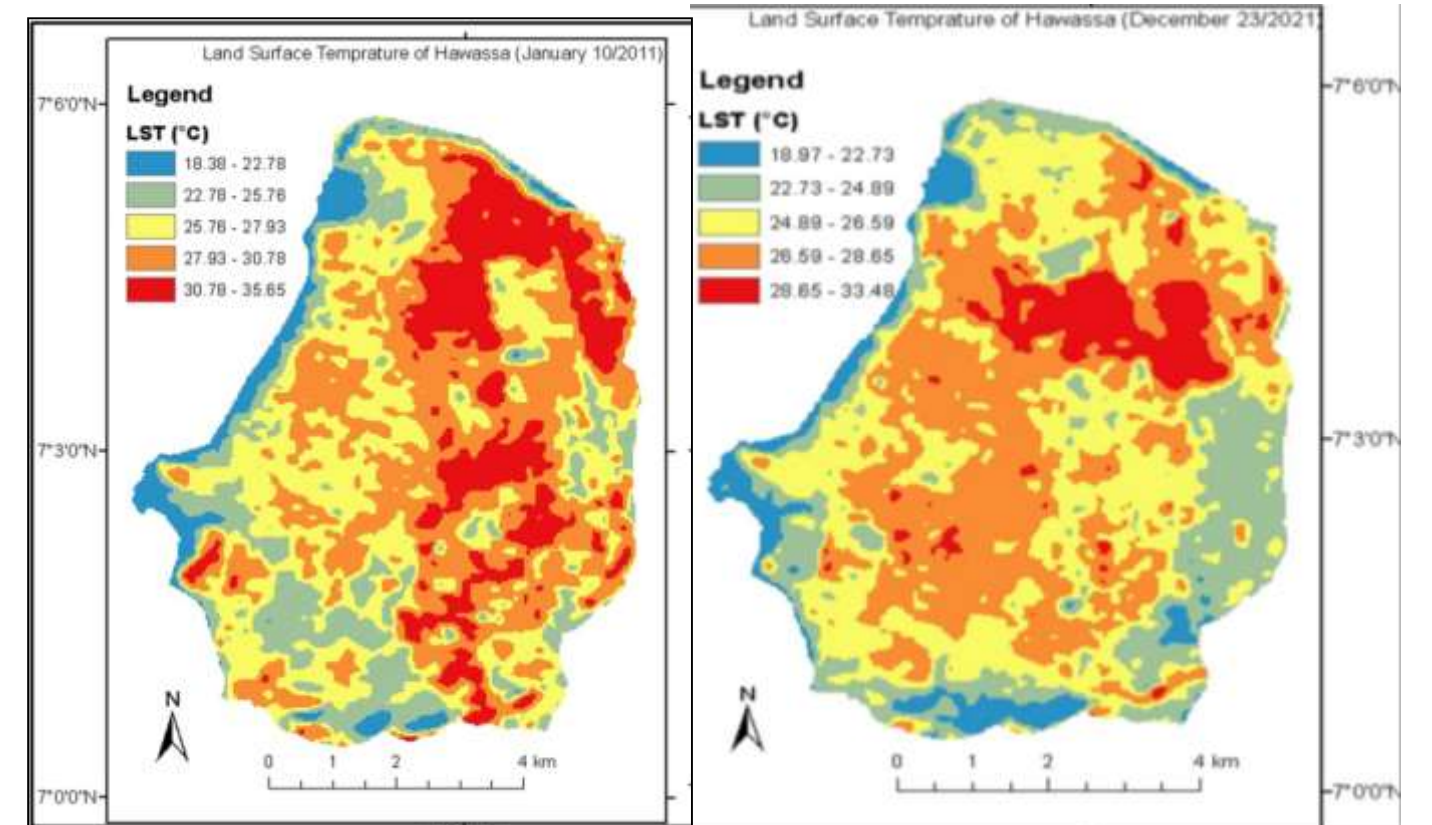
LST vs NDVI spatial/temporal variation

➤ **Vegetation index:** NDVI↑ from 0.17 (2011) to 0.23 (2021)

➤ **Hottest Zones (>30°C):**

- recorded in industrial areas, residential, and CBD zones.

➤ **Moderate temperature (27–30°C):** oldest neighborhood of the city



Conclusion and recommendations

Urban green spaces & cooling effect

- ✓ Urban tree cover increased between 2011 and 2021 despite rapid urbanization
- ✓ A rise in NDVI and TCC → LST decreased, showing the cooling effect of urban green spaces.

Integration of green and built environments

- Increasing TCC in Hawassa, even amidst urban growth:
 - ✓ New green spaces emerged alongside infrastructure development.
 - ✓ Urban growth can integrate both built-up areas & vegetation, fostering a balanced environment.

Spatial variation of LST

- **LST is highest** in concrete-dominated areas
 - ✓ **industrial zones, CBD, and residential areas** recorded **LST > 30°C**.
 - ✓ This emphasizes the **urban heat island effect**.

Policy & Future Planning

- ✓ Balance green and grey by revisiting the existing structural plan to enhance the city's climate resilience
- ✓ The minimum standard for TCC should be adopted to maintain climate-resilient cities
- ✓ Enhance TCC by integrating trees in all planning stages
- ✓ Use TCC & NDVI as UHI indicators for long-term monitoring
- ✓ The findings can serve as baseline information to set TCC goals and sustainability strategies

Thank You.

Tikabo Gebreyesus¹, Kumlachew Yeshitila ¹, Aramde Fetene ¹, Cristina Herrero Jauregui ²

¹ Ethiopian Institute of Architecture, Building Construction, and City Development, Addis Ababa University, Ethiopia

² Complutense University of Madrid, Department of Biodiversity, Ecology and Evolution, Spain

Gebreyesus et al. 2022 Email: gertik@uni-bonn.de /
45tikabo@gmail.com