



AFRICAN FORUM
ON URBAN FORESTS

2nd African Forum On Urban Forests

Green Horizons: Shaping the Future Resilience of African Cities through Urban Forests

18 March 2025 - 21 March 2025



in partnership with:



Community driven reforestation in the Buffelsdraai Community Reforestation Project, Durban, South Africa

Thembelihle Mlokoti

Restoration Ecology Branch • Biodiversity Management Department
eThekweni Municipality

2nd African Forum on Urban Forests
2025

The Forum The Campus, Bryanston



Community Reforestation Project (CRP)

Description:

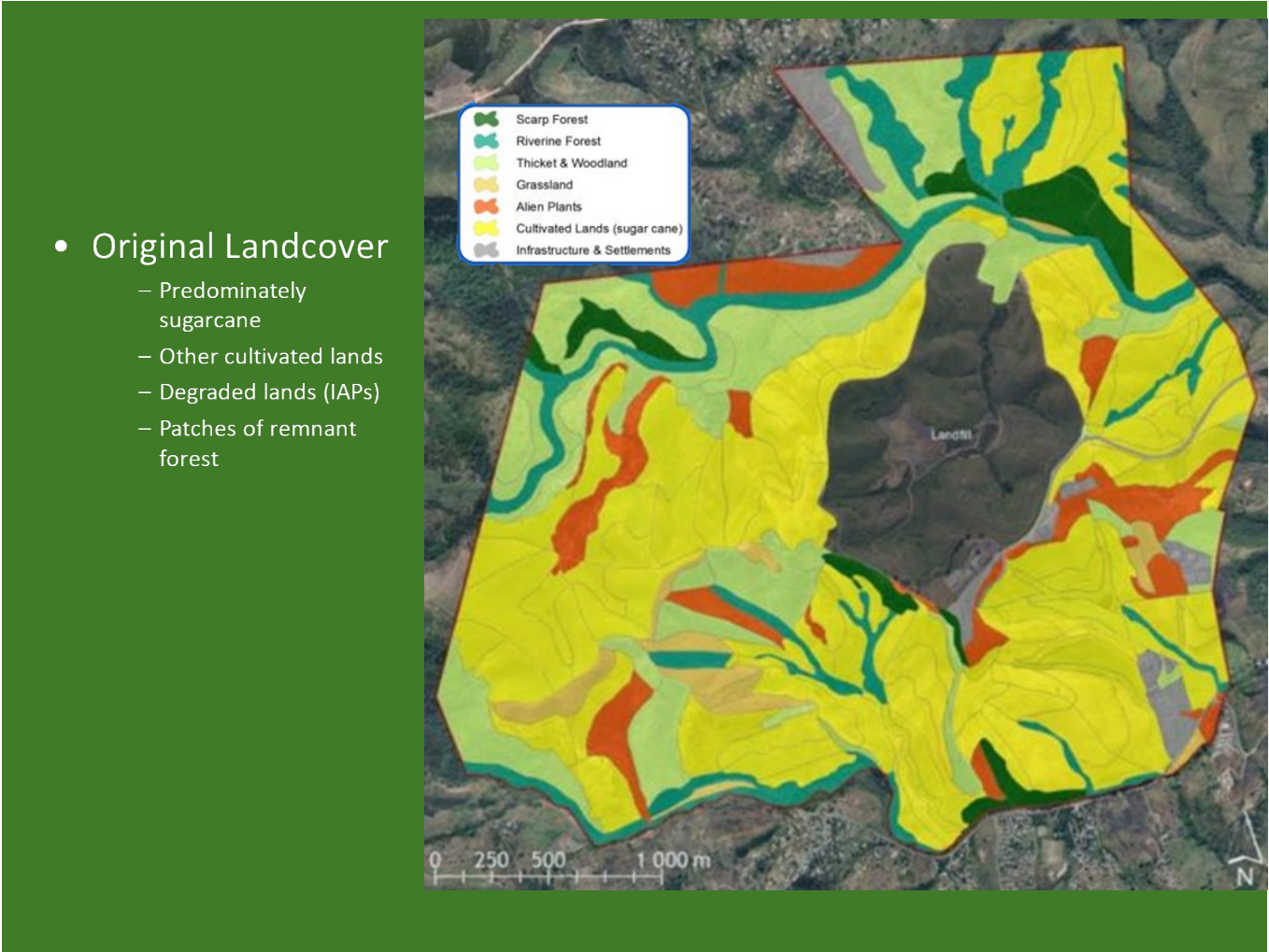
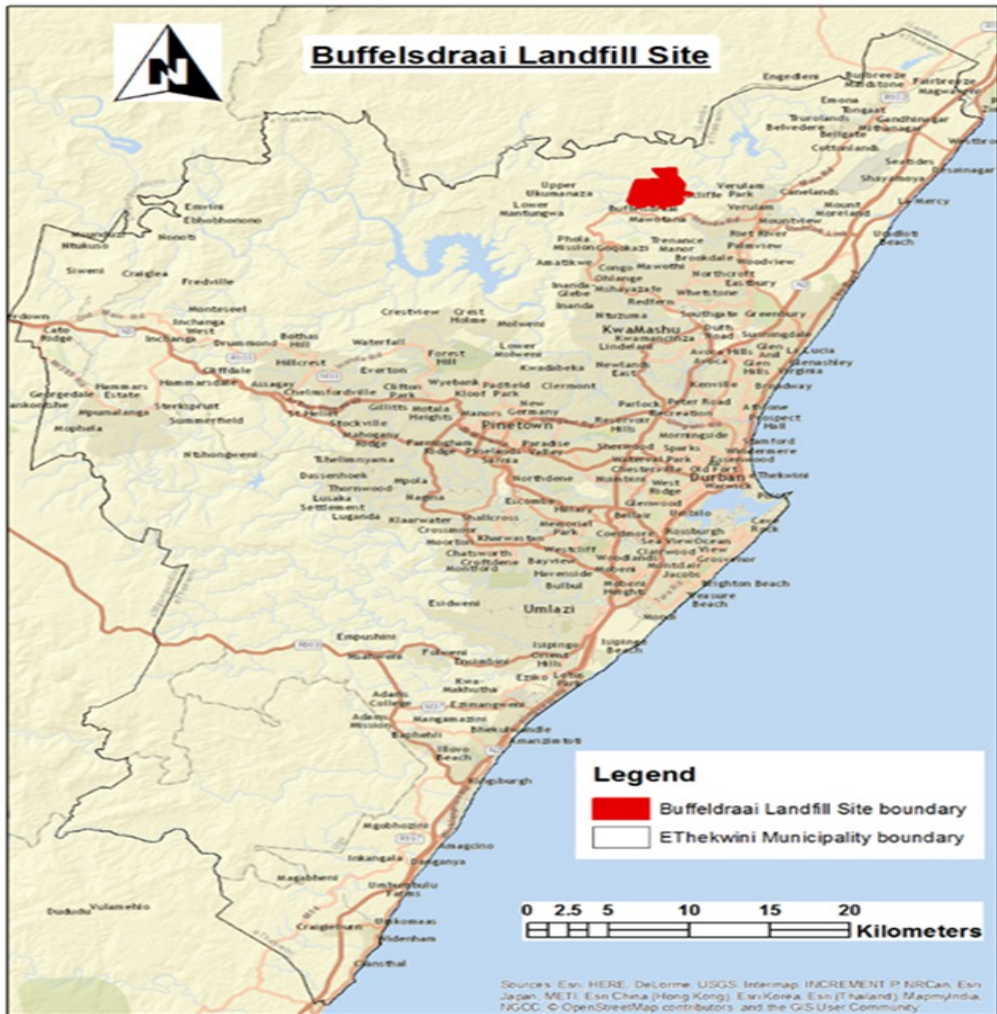
- Established in 2008 as a climate change mitigation initiative
- Community based restoration initiative
- Forest restoration is done through the **active planting** of indigenous trees and **removal of invasive alien plant species**
- Forest restoration further enhances biodiversity conservation and delivery of ecosystem goods and services, thus contributing to the climate change adaptation agenda
- Strong focus on socio-economic development including education & research

Location

Currently active in the Buffelsdraai Landfill Site Buffer Zone (Wards 59)



The Buffelsdraai Community Reforestation Project Site



Partnerships and funding



The Tree-preneur Model



facilitator
measures & counts
trees

WILDLANDS
CREDITORS: US\$4
www.wildlands.com

TREE PRENEUR NO: _____
NURSERIES: ABOULGASSEM, PAROIS 20
TOTAL NO OF TREES: _____
WEEKS: _____

Category	Value	Quantity	Total amount
A	0.40	2000	R 1000.00
B	0.10	1000	R 100.00
C	0.10	0	R 0.00
TOTAL CREDIT	0.50	0	R 1100.00

L. TRANSACTIONS: C.A. BOUTIER
L. F. PRODUCTIONS: Boutier
CREDIT NOTE 1001 & 1002

credit note
exchanged for goods
at tree store

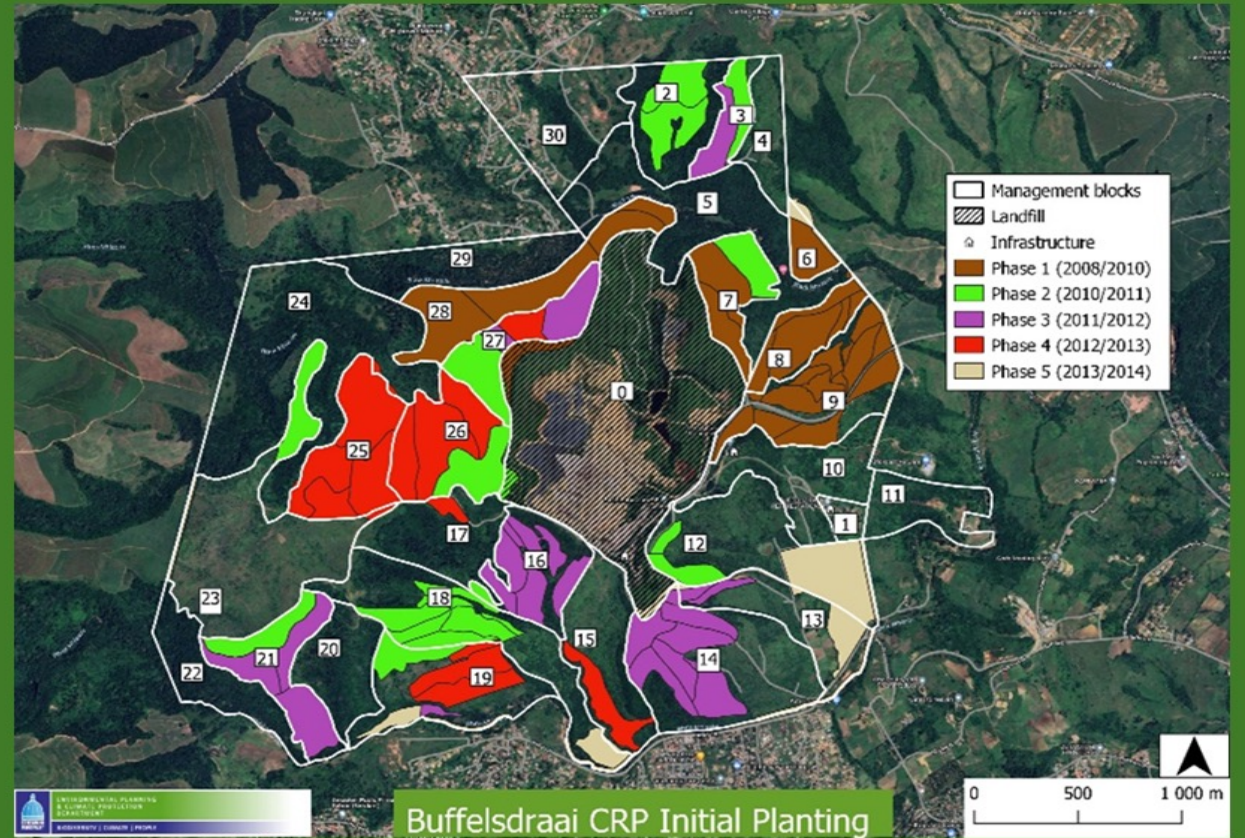
Trees
collected



Nursery Operations and Management



Buffelsdraai Community Reforestation Project



Buffelsdraai CRP Initial Planting

Buffesdraai Landfill Community Reforestation Project

10 years difference



2012



2022

A close up of one of the management blocks over time



Project Activities



IAP control and compliance

SITE AUDITING DATABASE

❖ Ecological data:

- Species
- NEMBA category
- Density
- Control method
- Type of herbicide
- IAP control status

❖ Environmental health and safety

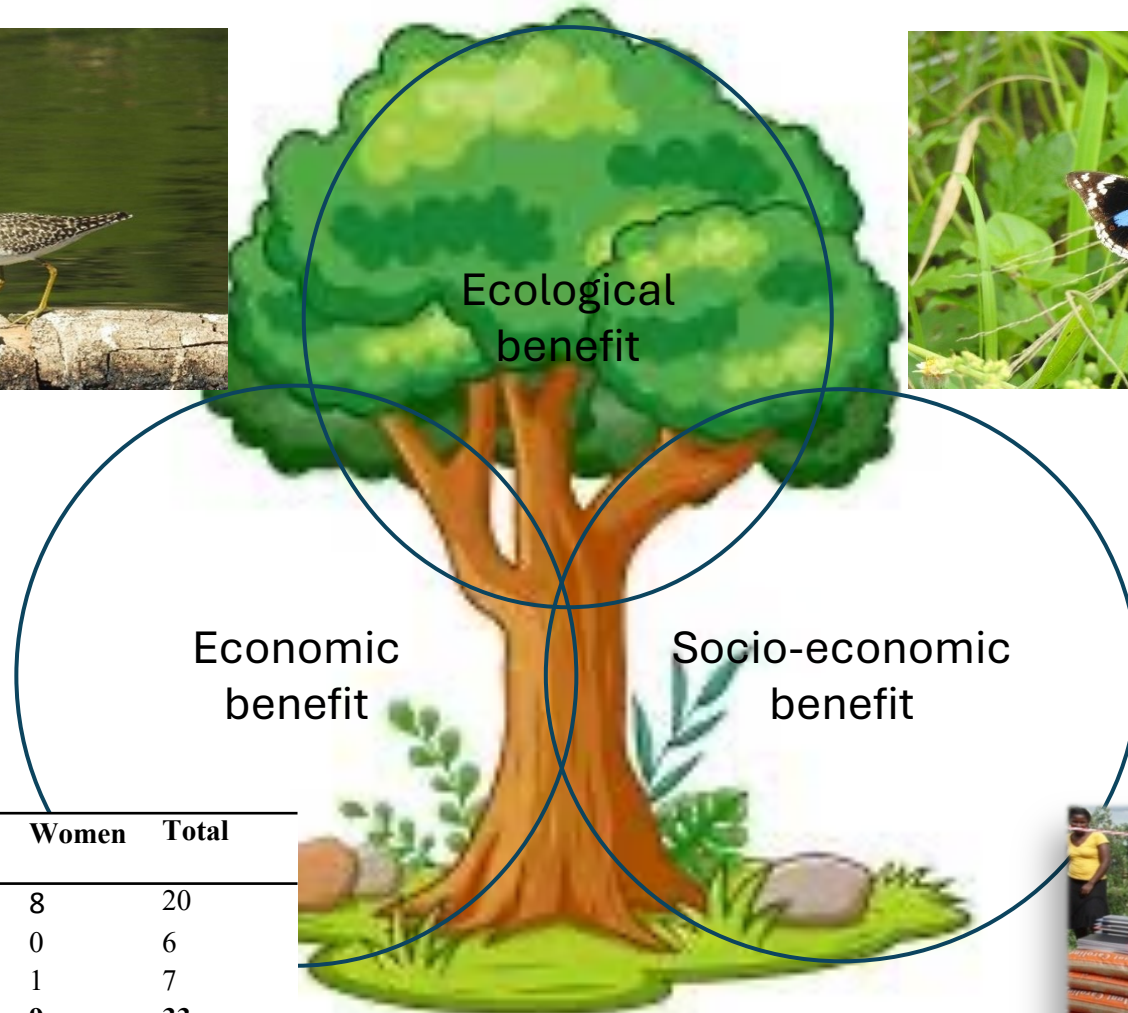
- Vehicle
- Tools and equipment
- General health and safety
- Herbicide
- Site clearing methodology
- Fire protection



SPECIES NOTED:									
Botanical Name	Common Name(s)	CARA	NEMBA	Location	Reason	2018	2019	2020	2022
<i>Ageratum conyzoides</i>	Invasive Ageratum	1	1b	From line in north-west	Seeded from parent stock	Low	Low	Low	Low
<i>Bidens pilosa</i>	Common black jack			Seedlings and small plants throughout area	Seeded from parent stock	-	-	-	-
<i>Cassipouira surmeliophorana</i>	Ban-banwood	2	2	Western nursery near entrance	Stem cut by glant end	-	-	-	-
<i>Chromolaena odorata</i>	Tiffed Weed	1	1b (IC73)	Along fence lines	Seeded from parent stock	Low	Low	Low	Low
<i>Catkins repens</i>	Creeping Inch	1	1b	Lower terrace on embankment	Seeded from parent stock	Low	-	-	-
<i>Eumalydium gracile</i>	Saligna gum/Rose gum	2	1b/2	Few large trees in west garden near entrance	Stem cut by glant end	-	-	-	-
<i>Albizia indica</i>	Mango tree			Few large trees at various locations in western nursery	Stem cut by glant end	Low	Low	Low	Low
<i>Melaleuca dorradech</i>	Springa	3	1b (IC73)	Along boundary fence and lower fence in north and south-west	Seeded from parent stock	Low	-	-	-



Benefits of the Community Reforestation Project

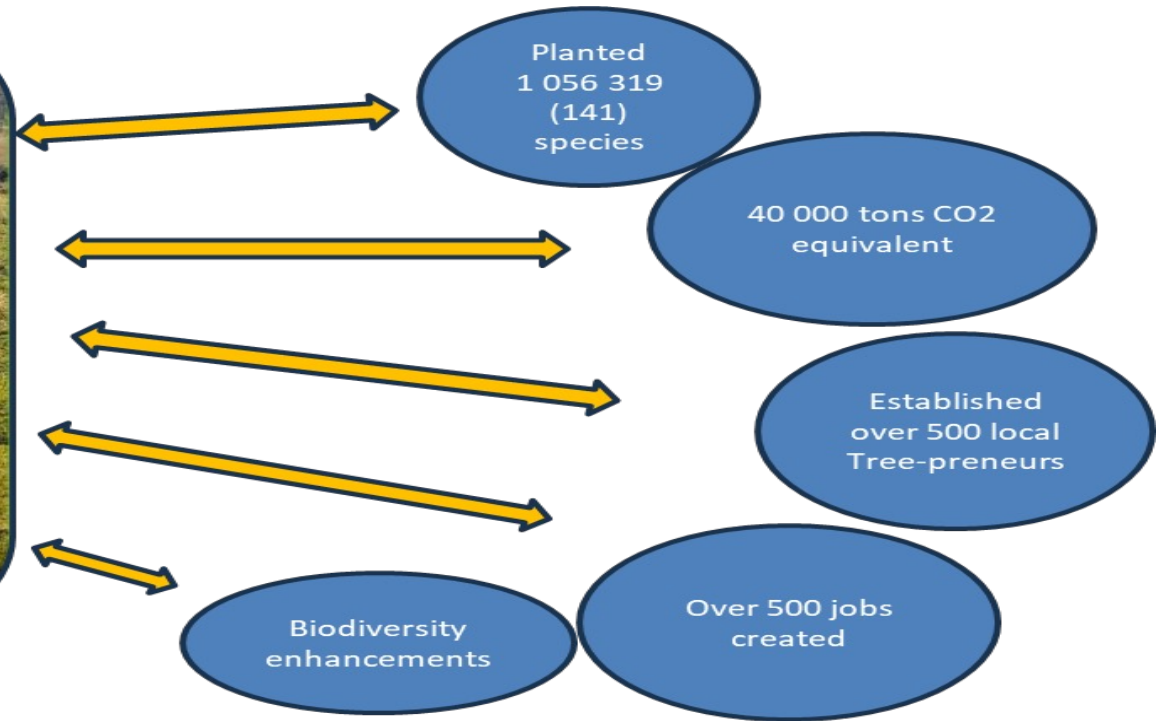


Category	Men	Women	Total
Full-time	12	8	20
Part-time	6	0	6
SMME's	6	1	7
Total	24	9	33





Project Successes



 1M indigenous plants	 141 plant species	 UN Award Gold Standard Validation Certificate
 204 birds	 14 small and medium mammals	
 32 reptiles	 Including the KZN Dwarf Chameleon	

Project Challenges

- Administrative Alignment- Supply Chain Management
- Support and political priorities
- Financial availability
- Majority of the challenges are relating to activities from the neighbouring communities: Livestock grazing, Illegal poaching and hunting, Illegal dumping, land invasions, Feral dogs and cats, Harvesting of flora, Arson and wildfires, Local leadership.
- Criminal activities on site.
- Housing encroachment.
- Invasive alien plants



- Housing encroachment.

Where to from here?

- Expansion of project into new areas
- Potential partnerships with other internal departments
- Control IAP as part of a long-term programme
- Long-term research and publications
- Fund-raising



TRANSFORMATIVE RIVERINE MANAGEMENT PROGRAMME

- Sihlanzimvelo programme
- Tree-preneur business programme



Treepreneur business accelerator programme

Summary of active Tree-preneurs (TPs) located in respective communities.

Community Nodes	Tree-preneurs	Female	Male	Youth	Adult
Buffelsdraai	80	60	20	15	65
Osindisweni	74	61	13	12	62
Other	73	24	50	13	60
Total	227	185	64	40	187

	No of cooperatives	Registered	In process
Buffelsdraai	4	1	3
Osindisweni /Mfolozi	5	2	3



Tree-preneurs business accelerator programme

- Resources
- Mentorship
- Training
- Networks

The number of trees ordered

Month	Year	No of Plants ordered
August	2023	693

THANK YOU

Schools, Community members, and Leaders,
NGOs, Universities and external funders

Departments, Branches, Policy
makers

Restoration Ecology,
FISC, WfE,
Implementation
agents, TP



edtea

Department:
Economic Development, Tourism and
Environmental Affairs
PROVINCE OF KWAZULU-NATAL



SABELIWE ENVIRONMENTAL SERVICES

SABULIWE ENVIYONDENZANENZI AKHONKE

University Of Kwazulu Natal Logo



UNIVERSITY OF
KWAZULU-NATAL
INYUVESI
YAKWAZULU-NATALI

SANBI

Biodiversity for Life

South African National Biodiversity Institute



WILDLANDS™
CONSERVATION TRUST



**forestry, fisheries
& the environment**

Department:
Forestry, Fisheries and the Environment
REPUBLIC OF SOUTH AFRICA



AFRICAN FORUM
ON URBAN FORESTS